



**INTERCONTEC
ONE CABLE AUTOMATION**



德国制造高科技产品 High-tech made in Germany

我们的使命是，开发适用于多种应用的卓越信号、现场总线 and 电源连接器。

凭借专业技能和市场专业知识，我们挑战现有标准。我们以远见卓识来确定未来的连接器技术，为我们的客户提供创新性和以市场为导向的解决方案。

我们的连接器遵循高度精密的工程原理，确保极其简单和高效的装配过程。

通过精心设计高度用户友好的优质系统解决方案，并在很短的时间内将其推向市场，我们迅速响应客户的需求。这是 TE Connectivity 和 Intercontec 产品的关键优势。

It is our mission to develop outstanding signal, fieldbus and power connectors for a wide range of applications.

With know-how and market expertise we challenge existing standards. We take a visionary approach to determine the connector technology of the future to provide our customers with innovative and market-oriented solutions.

Our connectors follow highly sophisticated engineering principles safeguarding an extremely easy and efficient assembly process.

By elaborating highly user-friendly optimum system solutions which are brought to the market in a very short time we quickly respond to our customers' needs. This is the key strength of TE Connectivity and the INTERCONTEC products.



目录		Table of Contents
页码 Page	内容	Content
4-7	技术数据	Technical Data
8-9	插头 (912)	Plug (912)
10-11	延长插头 (912)	Extension (912)
12-13	弯式插座 (912)	Receptacles Angled (912)
13	附件, 工具 (912)	Accessories, Tools (912)
14-15	插头 (917)	Plug (917)
16-17	延长插头 (917)	Extension (917)
18-19	弯式插座 (917)	Receptacles Angled (917)
20-21	附件, 工具 (917)	Accessories, Tools (917)
22	插头 (923)	Plug (923)
23	延长插头 (923)	Extension (923)
24-25	弯式插座 (923)	Receptacles Angled (923)
26-30	附件, 工具 (923)	Accessories, Tools (923)
31	术语表	Glossary
32-33	产品代码详述	Product Key
34-35	表	Tables

DIN EN ISO 9001:2015

质量

根据 DIN EN ISO 9001:2015 质量管理体系, 为全球用户提供符合标准的质量。

根据这些国家和国际标准进行的资格认证正在 Niederwinkling 的内部测试实验室进行。

在许多方面都超过国家和国际标准的严格且特殊的 Intercontec 要求基于特定公司标准而设定, 并通过 Intercontec 实验室中的真实测试进行记录和验证。连接器组件的高自动化水平以及生产过程中的实时控制提供了非常高的工艺可靠性和出色质量。

所有经过压接机加工的端子都经过拔出力和压接质量测试。定期进行显微切片测试和插接次数测试。

在生产过程中, 在 IP 防护、插针配置、连续性和插接测试方面集成了实时控制功能, 可确保我们的电缆组件具有出色的性能。

产品认证

请在以下位置查找所有相关产品认证:

<https://www.te.com/deu-de/products/brands/intercontec.html>

Quality

The quality management system according to DIN EN ISO 9001:2015 provides standard conforming quality for users worldwide.

Qualifications for certifications according to these national and international standards are being performed at the in-house test laboratory in Niederwinkling.

Very high, special INTERCONTEC demands, which surpass national and international standards in many regards are set in specific company standards, documented and verified with real life tests in the INTERCONTEC laboratory. The high automation level of the connector assembly with real-time control during production provides highest process liability and optimum quality.

All contacts that are processed with a crimp machine are extraction force and crimp quality tested. In regular intervals microscopic micro-section tests and mating cycle tests are conducted.

Integrated real-time controls during production in terms of IP protection, pin configuration, continuity and mating tests guarantee optimum performance of our cable assemblies.

Product Certifications

Please find all relevant product certificates under:

<https://www.te.com/global-en/products/brands/intercontec.html>

DIN 60529

IP 66/67

IP 防护等级符合 EN 60529

除非另有特别说明, 否则所有 Intercontec 连接器均具有 IP 66/67 防护等级。根据设计规格, 连接器必须能够抵御限制性能的环境影响 (灰尘、湿度、清洁溶剂等)。

(参见附录中的表格)

IP Protection Rating according to EN 60529

All INTERCONTEC connectors are IP 66/67 rated unless specifically stated otherwise. According to the design specification connectors have to be protected against environmental influences that limit the performance (dust, humidity, cleaning solvents, etc.).

(see tables in the appendix)

DIN EN ISO 60512

屏蔽和电磁兼容性 (EMC)

Intercontec 屏蔽层涂抹在可同轴旋转 360° 的外壳上, 能够提供出色的电磁兼容性。根据 EMC 法规, 设备必须满足以下标准:

1. 电磁干扰必须限制在可完成预期操作的范围内。
2. 设备必须提供适当的抗电磁干扰电阻, 以确保能够完成预期操作。

Shielding and Electromagnetic Compatibility (EMC)

The INTERCONTEC shielding rests on the housing coaxially 360° which provides optimum electromagnetic compatibility. According to legal EMC regulations devices must fulfill the following standards:

1. Electromagnetic interference must be limited to the degree that the intended operation is possible.
2. Devices must provide an appropriate resistance against electromagnetic interference to ensure the intended operation is possible.

载流量

有关载流量的所有规格均在 Intercontec 实验室中根据 DIN EN 60512 确定。在此过程中, 将创建一个载流量图表(降额曲线), 其中显示了同时流经所有端子的最大连续电流。

温度上限由端子和绝缘材料的热特性确定。环境温度与工作电流引起的温度上升值之和不得超过连接器的温度限值。

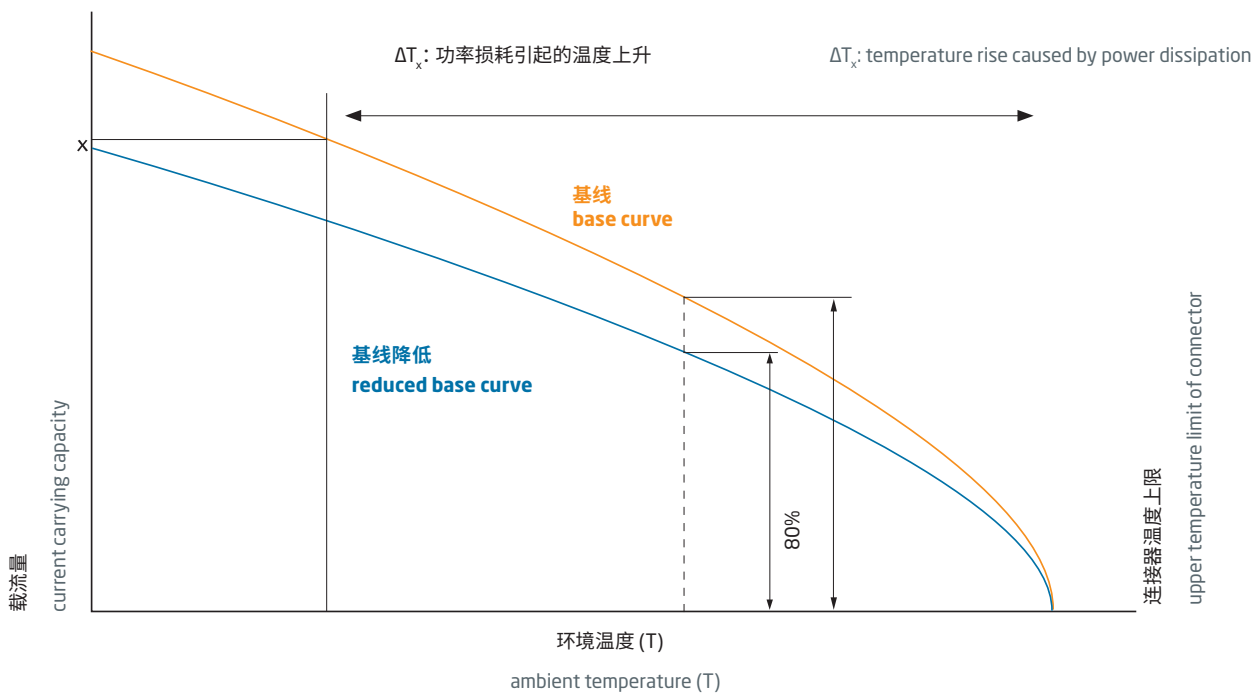
载流量不是一个恒定值, 而是随着环境温度的升高而降低。

Current Carrying Capacity

All specifications regarding electric current carrying capacity were determined in the INTERCONTEC laboratory according to DIN EN 60512. In this process a current carrying capacity diagramm (derating curve) is created, which shows the maximum continuous current flowing through all contacts simultaneously.

The upper temperature limit is defined by the thermal characteristics of contact and insulation material. The sum of ambient temperature and the temperature rise caused by the operating current must not exceed the temperature limit of the connector.

The current carrying capacity is not a constant value, but decreases with rising ambient temperature.



材料		
外壳	镀镍黄铜, 锌压铸, 涂塑	根据应用的不同, 金属外壳的材料是黄铜或锌压铸。锌压铸用于较大尺寸的零件, 黄铜主要用于圆形零件。体积较小的金属外壳上的特殊塑料涂层旨在减轻连接器重量。
联接螺母	镀镍黄铜, 镀镍压铸	
绝缘塑芯	PA/PBT, UL 94/V0	对于连接器的绝缘塑芯, 主要使用 PBT 和高质量 PA 变体, 特别适用于高应力技术压铸件。这种塑料具有非常好的化学、电气和机械性能。
端子	镀金黄铜	端子特性主要取决于材料。 特别重要的是: ▶ 稳定性和灵活性特性 ▶ 最高工作温度 ▶ 导电性 ▶ 成形性
密封	FKM/HNBR	必须使用特殊密封件来满足耐油、耐油脂、耐溶剂、耐酸、耐碱和耐化学物以及极端温度的工业要求。在 Intercontec, 这种标准材料是氟橡胶 [Viton]。
	EPDM	对于需要耐候、抗臭氧、抗紫外线和耐 -50°C 低温的特殊户外应用, 我们使用三元乙丙橡胶 (EPDM)。
夹圈	镀镍压铸, 镀镍黄铜	

Materials		
Housing	brass nickel-plated, zinc diecast, plastic coated	Depending on the application the material of the metal housing is either made of brass or zinc diecast. Zinc diecast is used for larger lot sizes and brass primarily for round parts. Special plastic coats on metal housings with reduced volume are designed to reduce the connector weight.
Coupling Nut	brass nickel-plated, zinc diecast nickel-plated	
Insulation Insert	PA/PBT, UL 94/V0	For insulation inserts of connectors mostly PBT and high-quality PA-variants are used that are especially suitable for highly stressed technical diecast parts. This plastic has very good chemical, electrical and mechanical properties.
Contacts	brass gold plated	The contact characteristics depend mainly on the materials. Especially important are: ▶ stability and flexibility characteristics ▶ max. operating temperature ▶ electrical conductivity ▶ formability
Sealing	FKM/HNBR	Special seals have to be used to cope with industrial requirements for resistance against oil, grease, solvents and acids, bases and chemicals as well as extreme temperatures. At INTERCONTEC the standard material is fluor rubber [Viton].
	EPDM	For special outdoor applications, which require weather, ozone, UV and temperature resistance down to -50° C ethylene propylene dien rubber (EPDM) is used.
Clamp Ring	zinc diecast nickel-plated, brass nickel-plated	

值符合 VDE 0110/EN 61984, 部件 6.19.2.2	
污染度	3
过压类别	III
最大操作高度	2000 m


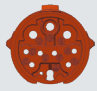


可根据请求提供单独的 VDE 认证和认可。

Values according to VDE 0110/EN 61984, part 6.19.2.2	
pollution degree	3
over voltage category	III
max. height for operation	2000m

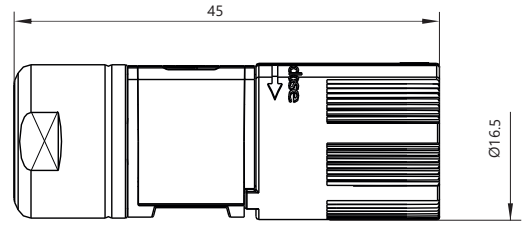
Individual VDE certifications and accreditations available on request.

般技术数据	
端子安装方式	压接
密封材料	FKM
温度范围	-20 °C 至 130 °C / 从 -50 °C 起可选
防护类型	已连接: IP 66, IP 67 可选: IP 68, IP 69 K
屏蔽	EMC 屏蔽四通道, 单独屏蔽, 符合Cat 5 和 ISO / IEC-11801 (2002)E
插接次数	最少500
线径范围	∅ 3.5 - ∅ 14.5 mm
连接器方向	直式插座: 方向可调 弯式插座: 330° 连续可调
锁定类型	SpeedTec 快速锁定紧固件

General Technical Data	
Contact termination	crimp version
Sealing material	FKM
Temperature range	-20 °C to 130 °C / optional from -50 °C
Protection type	connected: IP 66, IP 67 optional: IP 68, IP 69 K
Shielding	EMC shielding quad, separately shielded acc. Cat 5 and ISO / IEC-11801 (2002)E
Mating cycles	min. 500
Clamping range	∅ 3.5 - ∅ 14.5 mm
Connector orientation	Straight receptacles: adjustable orientation Angled receptacles: continuously adjustable 330°
Locking Types	SpeedTec quick lock fastener

电气数据		Electrical Data							
	系列 series	最大连接横截面处的 额定电流 rated current at max. connection cross section		额定电压 rated voltage		额定绝缘电压 (L-L) rated insulation voltage	插针数 numbers of pins	端子 ∅ contact ∅	最大横截面 max. cross section
		[A] nach VDE	[A] nach UL (USR)	[V] nach VDE	[V] nach UL (USR)	[kV]			
8 	912	8	8	630	630	6	4 (3+PE)	1	AWG 18
		1	1	48	48	1	4	0,6	0,34 mm ²
10 	912	8	8	300	300	2,5	4 (3+PE)	1	AWG 18
		1	1	32	32	0,8	4	0,6	0,34 mm ²
		1	1	50	50	0,8	2	0,6	0,34 mm ²
10 	917	8	8	630	750 AC / 890 DC	6	4 (3+PE)	1	AWG 18
		1	1	63	63	1,5	6	0,6	0,34 mm ²
10 	923	20	25	630	630	6	4 (3+PE)	2	2,5 mm ²
		5	5	48	48	1,5	2	1	1,5 mm ²
		5	1,2	48	48	1,5	4	0,6	0,34 mm ²

SpeedTec
QUICK LOCKING SYSTEM



B S ■ ■ ■ ■ ■ ■ ■ ■ ■ ■ **1 0 0 B** ■ ■ ■ ■

A 镀镍, 涂塑 nickel-plated, plastic coated

插头
镀镍和涂塑, 带 SpeedTec 快速
锁定紧固件

Plug
Nickel-plated and plastic
coated, with SpeedTec quick
lock fastener

包装单位: 100 件
Packaging unit: 100 pieces

绝缘塑芯和端子

Insulation Inserts and Contacts

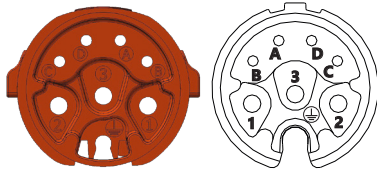


8-针插槽

8-pin Socket

(4 x Ø 1 mm D-Sub
(3 + PE) +
4 x Ø 0,6 mm)

插接视图
mating view



类似图示
ill. similar



母端子

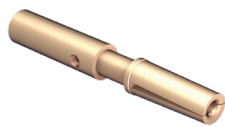
Ø 0,6 mm

不是产品内容的一部分

female contact

Ø 0,6 mm

Not part of product contents



Ø 0,6 mm

开槽, 压接范围 0.03 - 0.34 mm²
slotted, crimping range 0.03 - 0.34 mm²

60-0278-011-000

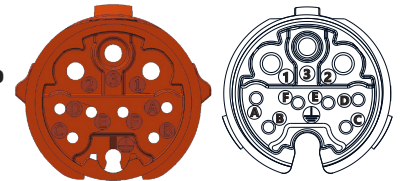


10-针插槽

10-pin Socket

(4 x Ø 1 mm D-Sub
(3 + PE) +
6 x Ø 0,6 mm)

插接视图
mating view



类似图示
ill. similar



Bandoleer 端子插槽

D-Sub Ø 1 mm

不是产品内容的一部分

Bandoleer contact

socket D-Sub Ø 1 mm

Not part of product contents



Ø 1 mm

AWG 24-28

1658538-2



Ø 1 mm

AWG 20-24

1658537-3



Ø 1 mm

AWG 18-22

1658542-1

货号 Art. No.



母端子

Ø 1 mm

不是产品内容的一部分

female contact

Ø 1 mm

Not part of product contents



Ø 1 mm

开槽, 压接范围 0.25 - 0.75 mm²
slotted, crimping range 0.25 - 0.75 mm²

60-0469-011-000

仅与 8 针版本兼容
only compatible with 8-pin version

货号 Art. No.

电缆固定夹

Cable Clamps



电缆固定夹

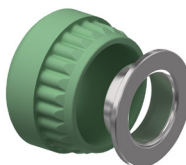
电缆夹紧范围 8.0 - 8.9 mm

Cable Clamp

cable clamping range 8.0 - 8.9 mm

应力消除和防扭曲保护功能集成了 360°
EMI 防护屏蔽连接。

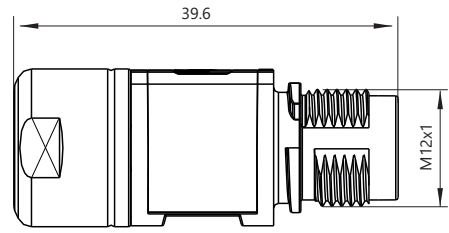
Strain relief and anti-twist protection
integrated 360° EMI protected shield
connection.



电缆夹紧范围 8.7 - 9.9 mm

cable clamping range 8.7 - 9.9 mm

SpeedTec
QUICK LOCKING SYSTEM



B K ■ ■ ■ ■ ■ ■ ■ ■ ■ ■ 1 0 0 3 ■ ■ ■ ■

A 镀镍, 涂塑

nickel-plated, plastic coated

延长插头

镀镍和涂塑, 用于 SpeedTec 快速
锁定紧固件

Extension

Nickel-plated and plastic coated,
for SpeedTec quick lock fastener

包装单位: 100 件

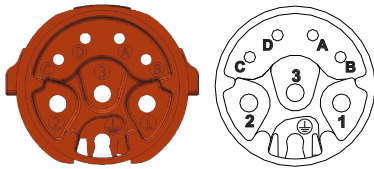
Packaging unit: 100 pieces

绝缘塑芯和端子

Insulation Inserts and Contacts



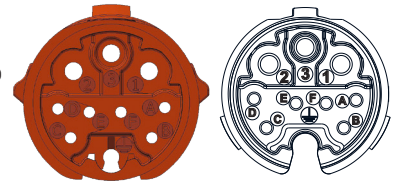
8-针端子
8-pin Contact
 (4 x Ø 1 mm D-Sub
 (3 + PE) +
 4 x Ø 0,6 mm)



插接视图
mating view



10-针端子
10-pin Contact
 (4 x Ø 1 mm D-Sub
 (3 + PE) +
 6 x Ø 0,6 mm)

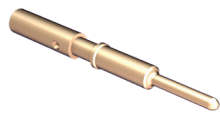


插接视图
mating view



公端子
Ø 0,6 mm
 不是产品内容的一部分

male contact
Ø 0,6 mm
 Not part of product contents



Ø 0,6 mm
 压接范围 0,03 - 0,34 mm²
 crimping range 0,03 - 0,34 mm²
61-0252-011-000



Bandoleer 端子插针
D-Sub Ø 1 mm
 不是产品内容的一部分

Bandoleer contact
pin D-Sub Ø 1 mm
 Not part of product contents



Ø 1 mm
 AWG 24-28

Ø 1 mm
 AWG 20-24

Ø 1 mm
 AWG 18-22

1658540-4

1658539-1

1658541-1 货号

Art. No.



公端子
Ø 1 mm
 不是产品内容的一部分

male contact
Ø 1 mm
 Not part of product contents



Ø 1 mm
 压接范围 0,25 - 0,75 mm²
 crimping range 0,25 - 0,75 mm²
61-0386-011-000

仅与 8 针版本兼容
 only compatible with 8-pin version

货号 Art. No.

电缆固定夹

Cable Clamps

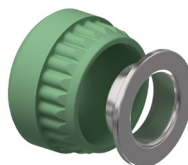


电缆固定夹
 电缆夹紧范围 8,0 - 8,9 mm

Cable Clamp
 cable clamping range 8,0 - 8,9 mm

应力消除和防扭曲保护功能集成了 360° EMI 防护屏蔽连接。

Strain relief and anti-twist protection integrated 360° EMI protected shield connection.



电缆夹紧范围 8,7 - 9,9 mm

cable clamping range 8,7 - 9,9 mm



公端子
Ø 1 mm
不是产品内容的一部分

male contact
Ø 1 mm
Not part of product contents



Ø 1 mm
压接范围 0.25 - 0.75 mm²
crimping range 0.25 - 0.75 mm²
61-0386-011-000

仅与 8 针版本兼容
only compatible with 8-pin version

货号 Art. No.

附件, 工具

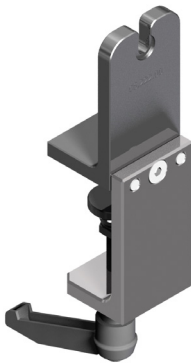
Accessories, Tools



C5-0034-000-000

D-Sub 端子安装工具

Mounting tool
for D-Sub contacts



C6-0222-000-000

装配工具

Assembly Tool

用于 912 屏蔽元件, 位置

For 912 shielding element,
position



8A-0050-000-000

塑料保护帽

与插座和延长插头兼容

Plastic Protection Cap

Compatible with receptacles and
extensions



C0-0324-000-000

数显压接工具 (通过定位器进行压接设置)

Digital Crimp Tool
(Crimp Set with Locator)

适用于端子线规 0.03 - 2.5 mm²。可调节的定位器装置允许处理各种端子。坚固型设计, 自校准, 带有壳体 and 定位器 C0-0265-000-000。

for contacts wire gauge 0.03 - 2.5 mm². The adjustable locator unit allows the processing of various contacts. Solid design, self-calibrating, with case and locator C0-0265-000-000.



C0-0265-000-000

定位器

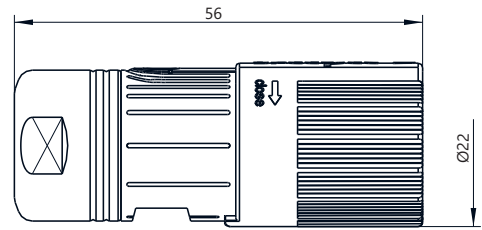
与压接工具 C0-0235-000-000 和 C0-0372-000-000 兼容。C0-0324-000-000 的产品内容部分。

Locator

Compatible with crimp tool C0-0235-000-000 and C0-0372-000-000. Part of product contents of C0-0324-000-000.

插槽	Sockets	插针	Pins
60-0278-011-000		61-0252-011-000	

SpeedTec
QUICK LOCKING SYSTEM



B S ■ ■ ■ ■ ■ ■ ■ ■ ■ ■ 1 2 7 A ■ ■ ■ ■

A 镀镍

nickel-plated

插头

镀镍, 带 SpeedTec 快速锁定
紧固件

Plug

Nickel-plated with SpeedTec
quick lock fastener

包装单位: 100 件
Packaging unit: 100 pieces

Isolierkörper und Kontakte

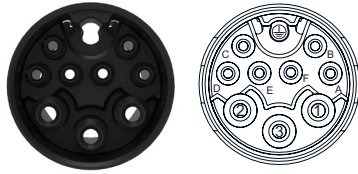
Insulation Inserts and Contacts



10-针插槽

10-pin Socket

(4 x Ø 1 mm
(3 + PE) +
6 x Ø 0,6 mm)



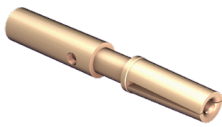
插接视图
mating view



母端子

Ø 0,6 mm

不是产品内容的一部分



Ø 0,6 mm

开槽, 压接范围 0,03 - 0,34 mm²
slotted, crimping range 0.03 - 0.34 mm²

60-0278-011-000

female contact

Ø 0,6 mm

Not part of product contents



Ø 0,6 mm

开槽, 压接范围 0,14 - 0,5 mm²
slotted, crimping range 0.14 - 0.5 mm²

60-0463-013-000



Bandoleer 端子插槽

D-Sub Ø 1 mm

不是产品内容的一部分



Ø 1 mm

AWG 24-28

1658538-2

Bandoleer contact socket D-Sub Ø 1 mm

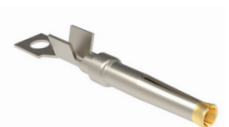
Not part of product contents



Ø 1 mm

AWG 20-24

1658537-3



Ø 1 mm

AWG 18-22

1658542-1

货号 Art. No.



母端子

Ø 1 mm

不是产品内容的一部分



Ø 1 mm

开槽, 压接范围 0,25 - 0,75 mm²
slotted, crimping range 0.25 - 0.75 mm²

60-0469-011-000

female contact

Ø 1 mm

Not part of product contents

货号 Art. No.

电缆固定夹

Cable Clamps



冠状夹具

适用于电缆夹紧范围 3,5 - 6,0 mm

集成式密封、防扭曲和同轴冠状屏蔽连接。

Crown Clamp

suitable for cable clamping range 3.5 - 6.0 mm

Integrated seal, anti-twist protection and coaxial crown shield connection.



适用于电缆夹紧范围 6,0 - 9,5 mm

suitable for cable clamping range 6.0 - 9.5 mm



适用于电缆夹紧范围 9,5 - 12,0 mm

suitable for cable clamping range 9.5 - 12.0 mm

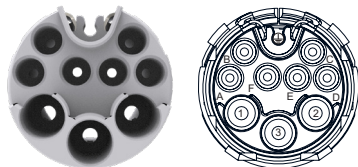
绝缘塑芯和端子

Insulation Inserts and Contacts



10-针端子
10-pin Contact

(4 x Ø 1 mm
(3 + PE) +
6 x Ø 0,6 mm)



插接视图
mating view



公端子
Ø 0,6 mm
不是产品内容的一部分

male contact
Ø 0,6 mm
Not part of product contents



Ø 0,6 mm
压接范围 0,03 - 0,34 mm²
crimping range 0.03 - 0.34 mm²
61-0252-011-000

Ø 0,6 mm
压接范围 0,14 - 0,5 mm²
crimping range 0.14 - 0.5 mm²
61-0382-013-000



Bandoleer 端子插针
D-Sub Ø 1 mm
不是产品内容的一部分

Bandoleer contact
pin D-Sub Ø 1 mm
Not part of product contents



Ø 1 mm
AWG 24-28
1658540-4

Ø 1 mm
AWG 20-24
1658539-1

Ø 1 mm
AWG 18-22
1658541-1

货号 Art. No.



公端子
Ø 1 mm
不是产品内容的一部分

male contact
Ø 1 mm
Not part of product contents



Ø 1 mm
压接范围 0,25 - 0,75 mm²
crimping range 0.25 - 0.75 mm²
61-0386-011-000

货号 Art. No.

电缆固定夹

Cable Clamps



皇冠型线夹
适用于电缆夹紧范围 3,5 - 6,0 mm

Crown Clamp
suitable for cable clamping range 3.5 - 6.0 mm

集成式密封、防扭曲和同轴冠状屏蔽连接。

Integrated seal, anti-twist protection and coaxial crown shield connection.



适用于电缆夹紧范围 6,0 - 9,5 mm

suitable for cable clamping range 6.0 - 9.5 mm



适用于电缆夹紧范围 9,5 - 12,0 mm

suitable for cable clamping range 9.5 - 12.0 mm

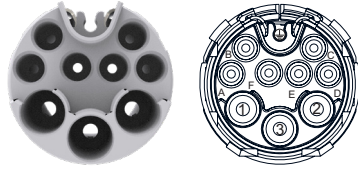
绝缘塑芯和端子

Insulation Inserts and Contacts



10-针端子
10-pin Contact

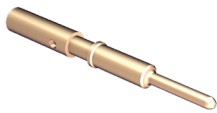
(4 x Ø 1 mm
(3 + PE) +
6 x Ø 0,6 mm)



插接视图
mating view



公端子
Ø 0,6 mm
不是产品内容的一部分



Ø 0,6 mm
压接范围 0,03 - 0,34 mm²
crimping range 0,03 - 0,34 mm²
61-0252-011-000

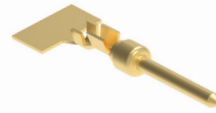
male contact
Ø 0,6 mm
Not part of product contents



Ø 0,6 mm
压接范围 0,14 - 0,5 mm²
crimping range 0,14 - 0,5 mm²
61-0382-013-000



Bandoleer 端子插针
D-Sub Ø 1 mm
不是产品内容的一部分



Ø 1 mm
AWG 24-28
1658540-4

Bandoleer contact
pin D-Sub Ø 1 mm
Not part of product contents



Ø 1 mm
AWG 20-24
1658539-1



Ø 1 mm
AWG 18-22
1658541-1

货号 Art. No.



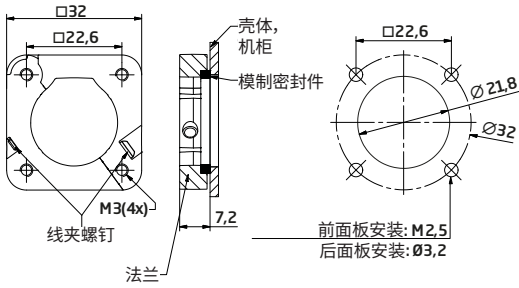
公端子
Ø 1 mm
不是产品内容的一部分



Ø 1 mm
压接范围 0,25 - 0,75 mm²
crimping range 0,25 - 0,75 mm²
61-0386-011-000

male contact
Ø 1 mm
Not part of product contents

货号 Art. No.



E0-0194-002-000

铰链式金属法兰

带密封环, 可与直型外壳一起使用

Metal Flange, Hinged

with sealing ring, can be used with straight housing



类似图示
illustration similar

88-0142-002-000

金属保护帽

与插头和穿板式连接器 SpeedTec 兼容, 包括用于挂接的带孔眼绳索

Metal Protection Cap

compatible with plugs and bulkhead connectors SpeedTec includes cord with eyelet for attachment



8A-0029-000-000

塑料保护帽

与插座和延长插头 SpeedTec 及螺钉版本 (包括附件束带) 兼容

Plastic Protection Cap

compatible with receptacles and extensions SpeedTec and screw version, includes retaining band for attachment



8B-0048-001-000

金属保护帽

与插座和延长插头 SpeedTec 及螺钉版本兼容, 包括密封件和用于挂接的带孔眼绳索

Metal Protection Cap

compatible with receptacles and extensions SpeedTec and screw version, includes seal and cord with eyelet for attachment



C6-0108-000-000

可旋转插座的调整杆

用于设置可自由旋转的弯式插座的电缆出口方向

Adjusting Lever for Rotatable Receptacles

for setting direction of cable outlet of freely rotatable angled receptacles



C5-0034-000-000

D-Sub 端子安装工具

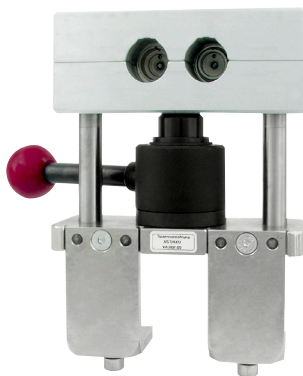
Mounting tool
for D-Sub contacts

C0-0324-000-000

数显压接工具
(通过定位器进行压接
设置)Digital Crimp Tool
(Crimp Set with Locator)

适用于端子线规 0.03 - 2.5 mm²。
可调节的定位器装置允许处理各
种端子。强固型设计, 自校准, 带有
壳体 and 定位器 C0-0265-000-000。

for contacts wire gauge 0.03 -
2.5 mm². The adjustable locator
unit allows the processing of
various contacts. Solid design,
self-calibrating, with case and
locator C0-0265-000-000.



WA-1092-000-000

固定装置

Fixture

用于轻轻拧紧直型连接器, 以便
通过螺丝安装在电缆固定夹上

for gently tightening straight
connectors to screw on cable
clamp



C0-0265-000-000

定位器

Locator

与压接工具 C0-0235-000-
000 和 C0-0372-000-000 兼
容。C0-0324-000-000 的产品
内容部分。

Compatible with crimp tool
C0-0235-000-000 and
C0-0372-000-000.
Part of product contents of
C0-0324-000-000.



C0-0201-000-000

中型压接工具

Crimp Tool, mid-size

适用于 Ø 1 mm 和 Ø 2 mm 端子
最大线规 4 mm², 包括定位器

for Ø 1 mm and Ø 2 mm
contacts max wire gauge
4 mm², includes positioner

有关兼容的定位插件, 请参见
右图

For compatible positioning insert
see right

C0-0403-000-000

定位插件

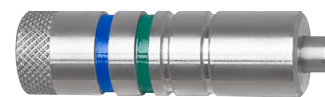
Positioning insert

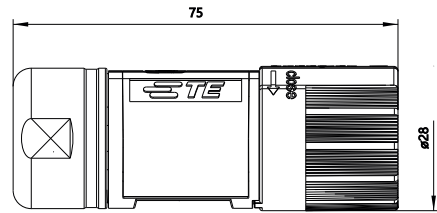
与压接工具 C0-0201-000-000
兼容。不是 C0-0201-000-000 产
品内容的一部分。

Compatible with crimp tool
C0-0201-000-000.
Not part of product contents of
C0-0201-000-000.

插槽	Sockets	插针	Pins
60-0469-011-000		61-0386-011-000	

插槽	Sockets	插针	Pins
60-0278-011-000		61-0252-011-000	
60-0463-013-000		61-0382-013-000	





B S ■ ■ ■ ■ ■ ■ ■ ■ ■ ■ **V120** ■ ■ ■ ■ ■ ■ ■ ■ ■ ■

A 镀镍, 涂塑 nickel-plated, plastic coated

插头

镀镍和涂塑, 带 SpeedTec 快速锁定紧固件

Plug

Nickel-plated and plastic coated, with SpeedTec quick lock fastener

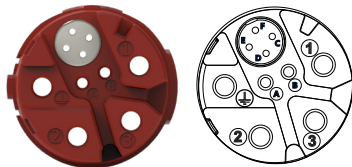
绝缘塑芯和端子

Insulation Inserts and Contacts

■ ■ ■ ■ **701** ■ ■ ■ ■ ■ ■ ■ ■ ■ ■

10-针插槽
10-pin Socket

(4 x Ø 2 mm
(3 + PE) +
2 x Ø 1 mm +
4 x Ø 0,6 mm)



插接视图
mating view

货号 Art. No.

■ ■ ■ ■ ■ ■ ■ ■ **N 00** ■ ■ ■ ■ ■ ■ ■ ■ ■ ■

端子插槽
Ø 1 mm

不是产品内容的一部分

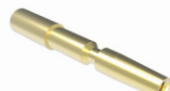


Ø 1 mm
钢丝弹簧, 压接范围 0.14 - 1.0 mm²
wire spring, crimping range 0.14 - 1.0 mm²

货号 Art. No. **60-0001-011-000**

Contact Socket
Ø 1 mm

不是产品内容的一部分



Ø 1 mm
开槽, 压接范围 0.5 - 1.5 mm²
slotted, crimping range 0.5 - 1.5 mm²

货号 Art. No. **60-0216-011-000**

■ ■ ■ ■ ■ ■ ■ ■ **N 00** ■ ■ ■ ■ ■ ■ ■ ■ ■ ■

母端子
Ø 2 mm

不是产品内容的一部分



Ø 2 mm
开槽, 压接范围 0.35 - 2.5 mm²
slotted, crimping range 0.35 - 2.5 mm²

货号 Art. No. **60-0408-011-000**

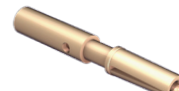
female contact
Ø 2 mm

不是产品内容的一部分

■ ■ ■ ■ ■ ■ ■ ■ **N 00** ■ ■ ■ ■ ■ ■ ■ ■ ■ ■

母端子
Ø 0,6 mm

不是产品内容的一部分



Ø 0,6 mm
开槽, 压接范围 0.03 - 0.34 mm²
slotted, crimping range 0.03 - 0.34 mm²

货号 Art. No. **60-0278-011-000**

female contact
Ø 0,6 mm

不是产品内容的一部分

■ ■ ■ ■ ■ ■ ■ ■ **43** ■ ■ ■ ■ ■ ■ ■ ■ ■ ■

皇冠型线夹

适用于电缆夹紧范围 4,2 - 6,6 mm

集成式密封、防扭曲和同轴冠状屏蔽连接。
无需修剪屏蔽层。

Crown Clamp

适用于电缆夹紧范围 4.2 - 6.6 mm

Integrated seal, anti-twist protection and coaxial crown shield connection. No shield trimming required.



■ ■ ■ ■ ■ ■ ■ ■ **48** ■ ■ ■ ■ ■ ■ ■ ■ ■ ■

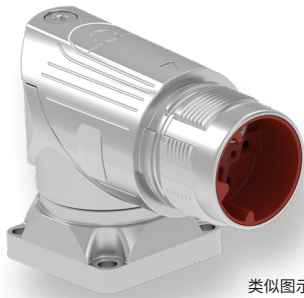
适用于电缆夹紧范围 7,5 - 12,0 mm

suitable for cable clamping range 7.5 - 12.0 mm

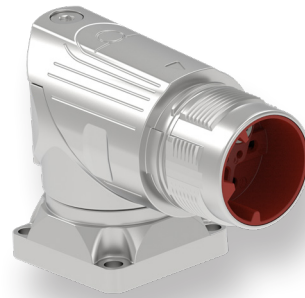
■ ■ ■ ■ ■ ■ ■ ■ **42** ■ ■ ■ ■ ■ ■ ■ ■ ■ ■

适用于电缆夹紧范围 9,5 - 14,5 mm

suitable for cable clamping range 9.5 - 14.5 mm



类似图示
illustration similar



B G ■ ■ ■ ■ ■ ■ ■ ■ ■ ■ V101 ■ ■ ■ ■ ■ ■ ■ ■ ■ ■

A 镀镍

nickel-plated

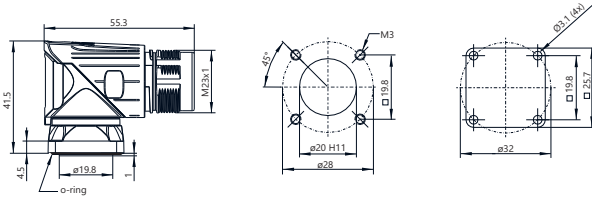
可旋转弯式插座

Receptacle Angled, Rotatable

镀镍, 用于 SpeedTec 快速锁定紧固件, 法兰安装 25 x 25 mm, 轴向 O 型环密封

Nickel-plated, for SpeedTec quick lock fastener, flange mount 25 x 25 mm, axial O-Ring seal

Mounting hole



B G ■ ■ ■ ■ ■ ■ ■ ■ ■ ■ V100 ■ ■ ■ ■ ■ ■ ■ ■ ■ ■

A 镀镍

nickel-plated

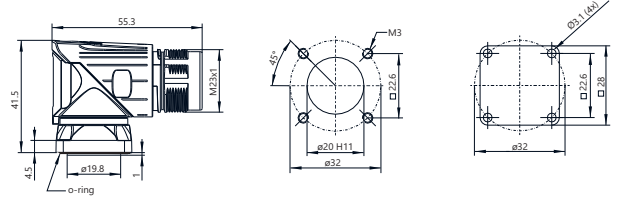
可旋转弯式插座

Receptacle Angled, Rotatable

镀镍, 用于 SpeedTec 快速锁定紧固件, 法兰安装 28 x 28 mm, 轴向 O 型环密封

Nickel-plated, for SpeedTec quick lock fastener, flange mount 28 x 28 mm, axial O-Ring seal

Mounting hole



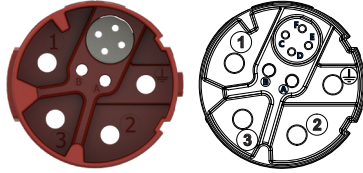
绝缘塑芯和端子

Insulation Inserts and Contacts



10-针端子
10-pin Contact

(4 x Ø 2 mm
(3 + PE) +
2 x Ø 1 mm +
4 x Ø 0,6 mm)



插接视图
mating view



端子插针
Ø 1 mm

不是产品内容的一部分



Ø 1 mm
压接范围 0,14 - 1,0 mm²
crimping range 0.14 - 1.0 mm²
61-0004-011-000

Contact pin
Ø 1 mm

Not part of product contents



Ø 1 mm
压接范围 0,5 - 1,5 mm²
crimping range 0.5 - 1.5 mm²
61-0221-011-000



公端子
Ø 2 mm

不是产品内容的一部分



Ø 2 mm
压接范围 0,35 - 2,5 mm²
crimping range 0.35 - 2.5 mm²
61-0193-011-000

male contact
Ø 2 mm

Not part of product contents

货号 Art. No.



公端子
Ø 0,6 mm

不是产品内容的一部分



Ø 0,6 mm
压接范围 0,03 - 0,34 mm²
crimping range 0.03 - 0.34 mm²
61-0252-011-000

male contact
Ø 0,6 mm

Not part of product contents

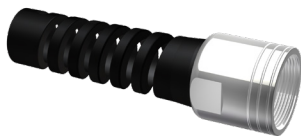
货号 Art. No.



A2-0164-001-000

弯折保护 Bend Protection

高达 \varnothing 11 mm, 带夹圈
up to \varnothing 11 mm with clamp ring



A2-0165-001-000

弯折保护 Bend Protection

\varnothing 11 mm - \varnothing 14 mm, 带夹圈
 \varnothing 11 mm - \varnothing 14 mm with clamp ring



A2-0034-001-000

夹圈适配器 M25 x 1,5 Clamp ring adaptor M25 x 1.5

适用于电源插头和电源延长插头的电缆出口

suitable for cable outlets from power plugs and power extensions



A2-0045-001-000

夹圈适配器 M25 x 1,5 Clamp ring adaptor M25 x 1.5

带特殊距套, 可与使用电源插头和电源延长插头的非 Intercontec 电缆固定夹配合使用

with special distance sleeve for compatibility with non-INTERCONTEC cable clamps using power plugs and power extensions



8A-0002-000-000

塑料保护帽 Plastic protection cap

塑料保护帽, 适用于延长插头和插座

plastic protection cap suitable for extension and receptacle



8B-0070-000-000

塑料保护帽 Plastic protection cap

适用于 SpeedTec 和螺纹插头, 包括密封件和束带

suitable for SpeedTec and threaded plugs, includes sealing and retaining band



8B-0071-000-000

塑料保护帽 Plastic protection cap

适用于 SpeedTec 和螺纹插座, 包括束带

suitable for SpeedTec and threaded receptacles, includes retaining band

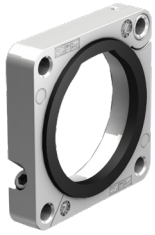


8B-0011-001-000

金属保护帽 Metal protection cap

轴向密封, 带导线搭接片。适用于延长插头和插座

axial sealing, with wire strap. Suitable for extension and receptacle



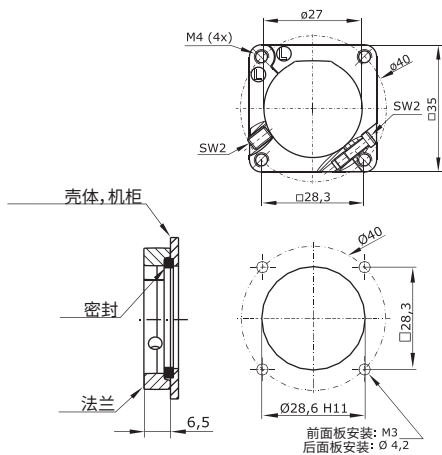
E0-0222-002-000

铰链式金属法兰

带密封环, 可选择与连接器和延长插头一起使用

Metal flange, hinged

with sealing ring, can be used alternatively with connectors and extensions



C0-0265-000-000

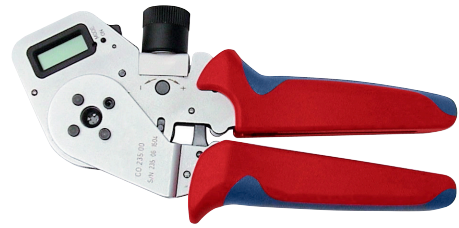
定位器

与压接工具 C0-0235-000-000 和 C0-0372-000-000 兼容。C0-0324-000-000 的产品内容部分。

Locator

Compatible with crimp tool C0-0235-000-000 and C0-0372-000-000. Part of product contents of C0-0324-000-000.

插槽	Sockets	插针	Pins
60-0278-011-000		61-0252-011-000	
60-0216-011-000		60-0221-011-000	



C0-0324-000-000

数显压接工具 (通过定位器进行压接设置)

适用于端子线规 0.03 - 2.5 mm²。可调节的定位器装置允许处理各种端子。坚固型设计, 自校准, 带有壳体 and 定位器 C0-0265-000-000。

Digital Crimp Tool (Crimp Set with Locator)

for contacts wire gauge 0.03 - 2.5 mm². The adjustable locator unit allows the processing of various contacts. Solid design, self-calibrating, with case and locator C0-0265-000-000.



WA-1672-000-000

气动压接工具

紧凑的免维护台式工具, 压力可达 25 kN, 操作压力 6 bar。手动或脚踏式开关。交付时不带任何压接插件。

Pneumatic Crimp Tool

Compact maintenance-free table tool for pressure force up to 25 kN, operating pressure 6 bar. Hand- or foot-operated switch. Delivery without any crimping inserts.



C0-0235-000-000

数显压接工具 (通过 2 个定位器装置进行压接设置)

适用于端子线规 0.03 - 2.5 mm²。两个可调节的定位器装置允许处理各种端子。坚固型设计, 自校准, 带有 2 个定位器装置和壳体。

Digital Crimp Tool (Crimp Set with 2 Locator units)

for contacts wire gauge 0.03 - 2.5 mm². Two adjustable locator units allow the processing of various contacts. Solid design, self-calibrating, with 2 locator units and case.



C0-0372-000-000

适用于 WA10672 的小型数字压接插件

包括定位器 C0-0242-000-000 和 C0-0243-000-000。将手动工具 C0-0235-000-000 的压接插件相关联。

Digital crimp insert, small for WA10672

Locator C0-0242-000-000 and C0-0243-000-000 included. Correlates the crimp inserts of hand tool C0-0235-000-000.



C0-0101-000-000

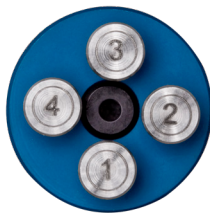
小型压接工具

适用于 \varnothing 1 mm 端子, 最大线规 1.5 mm², 包括调位器和定位器

Crimp Tool, small

for \varnothing 1 mm contacts, max wire gauge 1.5 mm², includes positioner and locator

插槽	Sockets	插针	Pins
60-0001-011-000		61-0004-011-000	



C0-0242-000-000

C0-0235-000-000 定位器

是产品内容的一部分。

Locator for C0-0235-000-000

Part of product contents.

插槽	Sockets	插针	Pins
60-0001-011-000		61-0004-011-000	



C0-0244-000-000

C0-0235-000-000 定位器

是产品内容的一部分。

Locator for C0-0235-000-000

Part of product contents.

插槽	Sockets	插针	Pins
60-0001-011-000		61-0004-011-000	



CO-0201-000-000

中型压接工具

适用于 $\varnothing 1\text{ mm}$ 和 $\varnothing 2\text{ mm}$ 端子, 最大线规 4 mm^2 , 包括定位器

有关兼容的定位插件, 请参见下图

Crimp Tool, mid-size

for $\varnothing 1\text{ mm}$ and $\varnothing 2\text{ mm}$ contacts max wire gauge 4 mm^2 , includes positioner

For compatible positioning inserts see below



CO-0373-000-000

适用于 WA10672 的中型数字压接插件

将手动工具 CO-0201-000-000 的 1 mm 和 2 mm 端子相关联, 最大线规 4 mm^2

Digital crimp insert, midsize for WA10672

Correlates the hand tool CO-0201-000-000 for 1 mm and 2 mm contacts max. wire gauge 4 mm^2



CO-0003-000-000

用于 $\varnothing 1\text{ mm}$ 端子的定位插件

与压接工具 CO-0201-000-000 和 CO-0217-000-000 兼容

Positioning Insert for $\varnothing 1\text{ mm}$ Contacts

compatible with crimp tools CO-0201-000-000 and CO-0217-000-000

插槽	Sockets	插针	Pins
60-0001-011-000		61-0004-011-000	



CO-0004-000-000

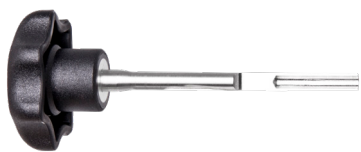
用于 $\varnothing 2\text{ mm}$ 端子的定位插件

与压接工具 CO-0201-000-000 和 CO-0373-000-000 兼容

Positioning insert for $\varnothing 2\text{ mm}$ Contacts

compatible with crimp tools CO-0201-000-000 and CO-0373-000-000

插槽	Sockets	插针	Pins
		61-0193-011-000	



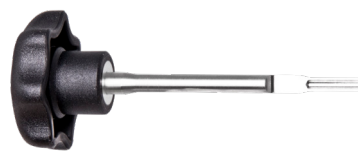
C5-0003-000-000

用于 \varnothing 2 mm 端子的装配工具

Assembly Tool for \varnothing 2 mm contacts

用于已压接或已焊接端子的安装工具

Fitting tool for already crimped or soldered contacts



C5-0002-000-000

用于 \varnothing 1 mm 端子的装配工具

Assembly Tool for \varnothing 1 mm contacts

用于已压接或已焊接端子的安装工具

Fitting tool for already crimped or soldered contacts



C6-0019-000-000

可旋转插座的调整杆

Adjusting Lever for Rotatable Receptacles

用于设置可自由旋转的弯式插座的电缆出口方向

for setting direction of cable outlet of freely rotatable angled receptacles

术语和定义 Terms and Definitions

圆形连接器技术

圆形连接器用于将电力和信号传输到工业、医疗和环境技术以及航空航天应用中的电机、驱动器和控制装置。

连接器不能在有电压和载荷的情况下连接和断开。

耦合器可以在有电压和载荷的情况下连接和断开。

连接技术

压接是指向下压、凹进和折叠。压接连接已广泛取代焊接连接，并已在实践中提供了出色的性能。DIN 标准 EN 60352 等提供了压接质量规格。压接是电线和压接端子的永久性电气连接。重要的测试标准是压接宽度、压接高度和最大张应力。有两种不同的端子类型可用于压接：

转向端子：这是一种非常常见的端子类型。该线规适用于端子的压接套筒。使用可调节压接工具时，应根据制造商的数据设置压接深度。

冲压端子：Bandoleer (卷盘馈入) 端子分为不同的压接尺寸，以提供电线和端子的安全连接。自动化处理能够确保获得卓越的工艺可靠性。绝缘压接为导体提供额外支撑，以避免在发生振动时损坏电线

间隙和绝缘击穿间隙 - 术语和定义

额定电压：额定电压是由制造商指定的电压值，作为连接器额定功率和应用范围的基础。

额定耐电压：此电压值表示特定连接器及其绝缘材料可以承载的最大临时过电压。

空气击穿间隙：空气击穿间隙定义为两个导电元件之间通过空气的最短距离。

漏电距离：绝缘击穿间隙定义为绝缘材料表面上两个导电元件之间的最短距离。

过压类别

该标准将过压分为四种安装类别。下面简要介绍了适用于连接器的三种类别：

安装类别 I：设备仅用于此类机器或作为不会发生过压的系统的一部分。此安装类别中的设备通常在超低压下运行。

安装类别 II：设备仅用于此类机器或作为不会发生闪电过压的系统的一部分。然而，可能会发生由转换引起的过压。这包括家用电器等。

安装类别 III：设备可安装在机器上或作为系统的一部分，在这些系统中不需要考虑闪电过压，但对这些设备及其供应系统的安全性和可用性有特殊要求。

绝缘材料的分类：

绝缘击穿间隙取决于绝缘材料的电痕特性。绝缘材料根据其相对漏电起痕指数 (CTI) 进行分类。

Circular Connector Technology

Circular Connectors are used to transmit electrical power and signals to motors, drives and controls in industrial, medical and environmental technology applications as well as aerospace.

Connectors must neither be connected nor disconnected under voltage and load.

Couplers can be connected and disconnected under voltage and load.

Connection Technologies

To crimp means to press, to indent and to fold. Crimp connections have widely replaced solder connections and have delivered optimal performance in practice. DIN Standard EN 60352 amongst others provides specifications for the crimp quality. A crimp is a permanent electrical connection of a wire and a crimp contact. Important test criteria are crimp width, crimp height and maximum tensile stress. There are two different contact types available for crimping:

Turned Contacts: This is a very common contact type. The wire gage is adapted to the contact's crimp sleeve. When using an adjustable crimp tool the depth of the crimp should be set according to manufacturer's data.

Stamped Contacts: Bandoleer (reel feed) contacts are divided into different crimp sizes to provide a secure connection of wire and contact. Automated processing ensures highest process liability. The insulation crimp gives additional support to the conductor to avoid damage to the wires under vibration

Clearance and Creepage Distance - Terms and Definitions

Rated Voltage: The rated voltage is a voltage value specified by the manufacturer that serves as basis for the power rating and range of application of a connector.

Rated Withstanding Voltage: This voltage value indicates the maximum temporary overvoltage a specific connector and its insulation materials can carry.

Clearance Distance: The clearance distance is defined as shortest distance through the air between two conductive elements.

Creepage Distance: The creepage is defined as shortest distance on the surface of an insulating material between two conductive elements.

Overvoltage Categories

The norm divides overvoltages in four installation categories. The three categories applicable to connectors are briefly described below:

Installation Category I: Equipment is intended for use only in such machines or as part of systems where no overvoltage can occur. Equipment in this installation category is normally operated at extra low voltage.

Installation Category II: Equipment is intended for use in machines or as part of systems where lightning overvoltages can not occur. Overvoltages caused by switching however may occur. This includes domestic appliances for example.

Installation Category III: Equipment is intended for installation in machines or as part of systems in which lightning overvoltages need not be considered, but which are subject to particular requirements regarding safety and availability of the equipment and its supply systems.

Categorization of Insulation Material:

The creepage distances depend on the tracking characteristics of the insulation material. Insulation materials are categorized according to their Comparative Tracking Index (CTI).

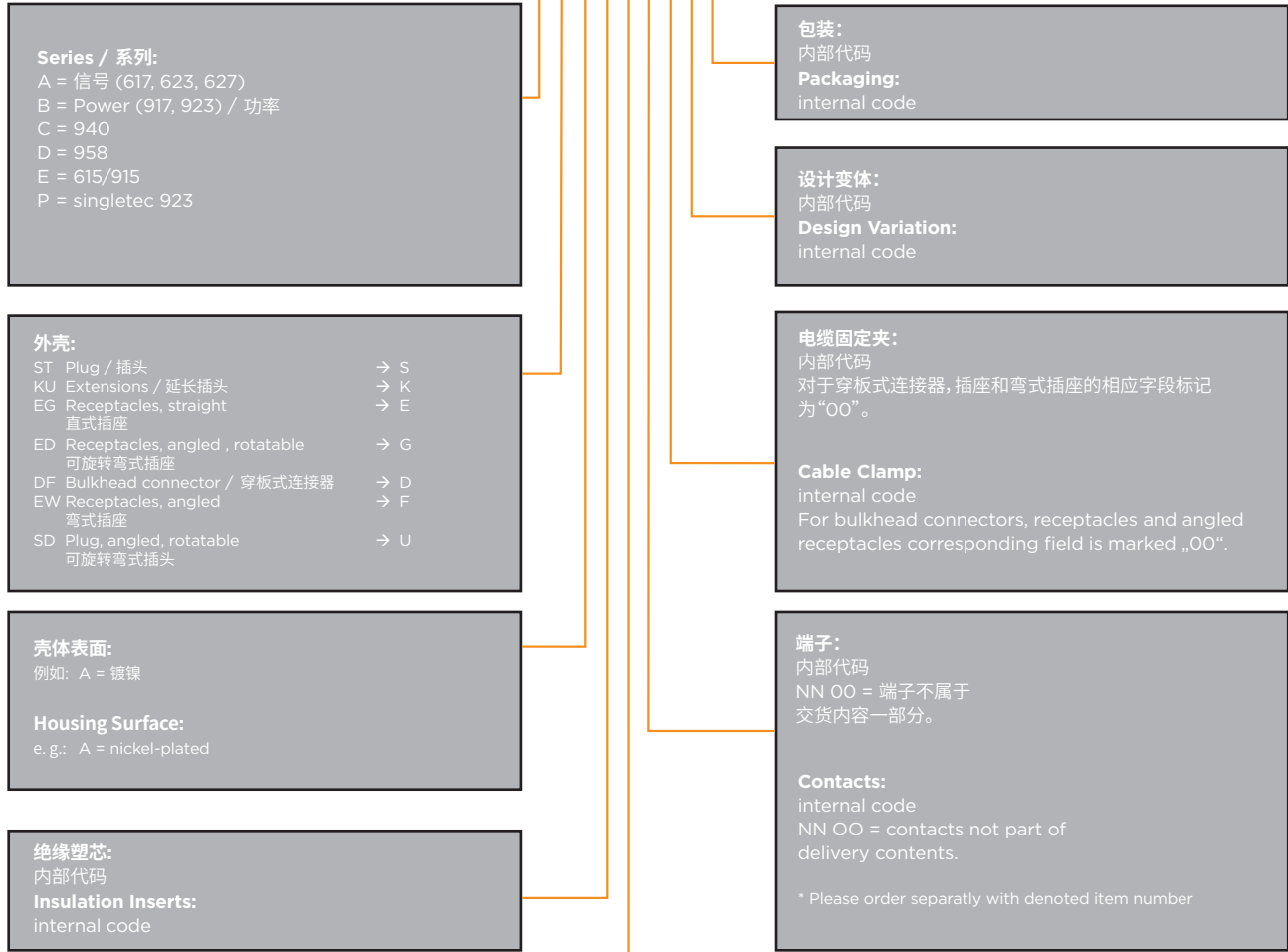
Finding a TE Part Number - 18 digits

TE CONNECTIVITY PART NUMBER

A S A 0 4 6 N 0 0 8 5 0 5 0 A 0 0 0

INTERCONTEC PART NUMBER

A S T A 0 4 6 N N 0 0 8 5 0 5 0 A 0 0 0



MALE / 公端			FEMALE / 母端		
OLD / 旧	NEW / 新	CONNECTION / 连接	OLD / 旧	NEW / 新	CONNECTION / 连接
MR	M	CRIMP	FR	F	CRIMP
MS	S	SOLDER / 焊接	FS	G	SOLDER / 焊接
MD	D	BOARD SOLDER / 板焊接	FD	H	BOARD SOLDER / 板焊接
MU	U	MIXED COMPONENTS / 混合元件	FU	P	MIXED COMPONENTS / 混合元件
MT	T	SCREWED / 带螺纹	FC	C	SCREW M5 LIMOTEC / 螺钉 M5 LIMOTEC
MC	K	SCREW/CRIMP / 螺钉/压接 762			
MM	A	618 扭矩			
NN	N	NO CONTACTS / 常开 (NO) 触点	NN	N	

Finding a TE Part Number - 15 digits

INTERCONTEC PART NUMBER: 60.004.11

	Letter / Number 字母/数字	Letter / Number 字母/数字	Special Character / 特殊字符	Letter 字母	Number 数字	Number 数字	Number 数字	Special Character / 特殊字符	Letter / Number 字母/数字	Letter Number 字母/数字	Letter / Number 字母/数字	Special Character / 特殊字符	Letter 字母	Letter / Number 字母/数字	Letter / Number 字母/数字
Part Number (Old) / 部件号(旧)	Position/ 位置 1	Position/ 位置 2	Position/ 位置 3	Position/ 位置 4	Position/ 位置 5	Position/ 位置 6	Position/ 位置 7	Position/ 位置 8	Position/ 位置 9	Position/ 位置 10	Position/ 位置 11	Position/ 位置 12	Position/ 位置 13	Position/ 位置 14	Position/ 位置 15
10.415.02	1	0	.		4	1	5	.		0	2				
60.004.11	6	0	.		0	0	4	.		1	1				
60.046.21.015	6	0	.		0	4	6	.		2	1	.	0	1	5
81.139.T92	8	1	.		1	3	9	.	T	9	2				
8C.001.01.001	8	C	.		0	0	1	.		0	1	.	0	0	1
A6.032.F15	A	6	.		0	3	2	.	F	1	5				
BB.182.00-SW	B	B	.		1	8	2	.		0	0	-	S	W	
FF.051.00.010	F	F	.		0	5	1	.		0	0	.	0	1	0
40.A132.00	4	0	.	A	1	3	2	.		0	0				

TE CONNECTIVITY PART NUMBER: 60-0004-011-0000

	Letter / Number 字母/数字	Letter / Number 字母/数字	Special Character / 特殊字符	Letter 字母	Number 数字	Number 数字	Number 数字	Special Character / 特殊字符	Letter / Number 字母/数字	Letter / Number 字母/数字	Letter / Number 字母/数字	Special Character / 特殊字符	Letter / Number 字母/数字	Letter / Number 字母/数字	Letter / Number 字母/数字
Part Number (New) / 部件号(新)	Position/ 位置 1	Position/ 位置 2	Position/ 位置 3	Position/ 位置 4	Position/ 位置 5	Position/ 位置 6	Position/ 位置 7	Position/ 位置 8	Position/ 位置 9	Position/ 位置 10	Position/ 位置 11	Position/ 位置 12	Position/ 位置 13	Position/ 位置 14	Position/ 位置 15
10-0415-002-000	1	0	-	0	4	1	5	-	0	0	2	-	0	0	0
60-0004-011-000	6	0	-	0	0	0	4	-	0	1	1	-	0	0	0
60-0046-021-015	6	0	-	0	0	4	6	-	0	2	1	-	0	1	5
81-0139-T92-000	8	1	-	0	1	3	9	-	T	9	2	-	0	0	0
8C-0001-001-001	8	C	-	0	0	0	1	-	0	0	1	-	0	0	1
A6-0032-F15-000	A	6	-	0	0	3	2	-	F	1	5	-	0	0	0
BB-0182-000-0SW	B	B	-	0	1	8	2	-	0	0	0	-	0	S	W
FF-0051-000-010	F	F	-	0	0	5	1	-	0	0	0	-	0	1	0
40-A132-000-000	4	0	-	A	1	3	2	-	0	0	0	-	0	0	0

常用铜线换算表(单位 AWG 和 mm²)Conversion table of prevalent copper wires in AWG and mm²

基于 DIN EN 60529 的 IP 防护等级

IP protection rating according to DIN EN 60529

导线横截面 Wire Cross-Section		线径 Wire Diameter		
AWG	mm ²	sq. inches	mm	inches
40	0,005	0,000008	0,080	0,00315
39	0,006	0,000010	0,090	0,00353
38	0,008	0,000012	0,101	0,00397
37	0,010	0,000016	0,113	0,00445
36	0,013	0,000020	0,127	0,00500
35	0,016	0,000025	0,134	0,00562
34	0,020	0,000031	0,160	0,00631
33	0,025	0,000039	0,180	0,00708
32	0,032	0,000050	0,202	0,00795
31	0,040	0,000063	0,227	0,00893
30	0,051	0,000079	0,255	0,01003
29	0,064	0,000100	0,286	0,01126
28	0,081	0,000125	0,321	0,01264
27	0,102	0,000158	0,361	0,01420
26	0,129	0,000200	0,405	0,01594
25	0,162	0,000252	0,455	0,01790
24	0,205	0,000317	0,511	0,02010
23	0,258	0,000400	0,573	0,02257
22	0,326	0,000505	0,644	0,02535
21	0,410	0,000636	0,723	0,02846
20	0,518	0,000802	0,812	0,03196
19	0,653	0,001012	0,912	0,03589
18	0,823	0,001276	1,024	0,04030
17	1,038	0,001609	1,150	0,04526
16	1,309	0,002028	1,291	0,05082
15	1,650	0,002558	1,450	0,05707
14	2,081	0,003225	1,628	0,06408
13	2,624	0,004067	1,828	0,07196
12	3,309	0,005129	2,053	0,08081
11	4,172	0,006467	2,305	0,09074
10	5,261	0,008155	2,588	0,10190
9	6,631	0,010279	2,906	0,11440
8	8,367	0,012969	3,264	0,12850
7	10,551	0,016354	3,665	0,14430
6	13,298	0,020612	4,115	0,16200
5	16,766	0,025987	4,620	0,18190
4	21,149	0,032781	5,189	0,20430
3	26,665	0,041331	5,827	0,22940
2	33,624	0,052117	6,543	0,25760
1	42,409	0,065733	7,348	0,28930
0	53,488	0,082907	8,252	0,32490

第 1 位数字 1 st Digit		注释 Comment
位号 No.	定义 Definition	
0	无防护 No protection	
1	防止直径为 50mm 或更大的固体异物。 Protected against solid foreign objects with a diameter of 50 mm or larger.	
2	防止直径为 12.5mm 或更大的固体异物。 Protected against solid foreign objects with a diameter of 12.5 mm or larger.	
3	防止直径为 2.5mm 或更大的固体异物。 Protected against solid foreign objects with a diameter of 2.5 mm or larger.	
4	防止直径为 1mm 或更大的固体异物。 Protected against solid foreign objects with a diameter of 1 mm or larger.	
5	防尘。 Dust-protected.	不能完全阻止灰尘进入,但灰尘的渗入量不能影响设备的正常运行或损害安全。 Ingress of dust is not totally prevented, but dust shall not penetrate in a quantity to interfere with satisfactory operation of the apparatus or to impair safety.
6	防尘 Dust tight	无灰尘进入 No ingress of dust

IP 防护等级符合 DIN EN 60529
IP protection rating according to DIN EN 60529

第 2 位数字		2 nd Digit
编号 No.	定义 Definition	注释 Comment
0	无防护 No protection	
1	防止垂直落下的水滴 Protected against vertically falling water drops	
2	防止外壳倾斜至 15° 时垂直落下的水滴 Protected against vertically falling water drops when housing is tilted up to 15°	
3	防止喷水 Protected against water sprays	从垂直轴的两侧以 60° 角喷溅的水不应产生有害影响。 Water sprayed at a 60° angle from either side of the vertical axis, shall have no harmful effect.
4	防止溅水 Protected against splashed water	从任何方向溅到外壳上的水不应产生有害影响。 Water splashed against the housing from any direction shall have no harmful effect.
5	从任何方向猛烈溅到外壳上的水不应产生有害影响。 Water splashed as powerful jet against the housing from any direction shall have no harmful effect.	
6	从任何方向喷射到外壳上的水不应产生有害影响。 Water splashed as jet against the housing from any direction shall have no harmful effect.	
7	防止暂时浸入水中带来的影响 Protected against the effects of temporary immersion in water	当外壳在 1 米深的水中浸泡 30 分钟时, 水的进入量不得造成有害影响。 Water shall not enter in such quantity as to cause harmful effects when the housing is immersed for 30 min. under 1 m of water.
8	防止长时间浸入水中带来的影响 Protected against the effects of long submersion in water	经制造商和用户同意, 当外壳持续浸没在水中时, 水的进入量不得造成有害影响。这些条件必须比上述针对防护等级 7 的条件更严格。 Water may not enter in such quantity as to cause harmful effects when the housing is continuously submersed in water under conditions which shall be agreed to by manufacturer and user. These conditions must be more severe than those above for numeral 7.
9	经制造商和用户同意, 当外壳持续浸没在水中时, 水的进入量不得造成有害影响。这些条件必须比上述针对防护等级 7 的条件更严格。 Protected against the penetration of water during high pressure / steam cleaning	从任何方向流向外壳的水以及压力增加都不应产生任何有害影响。 Water directed at the housing from any direction and with increased pressure shall not have any harmful effect.

1. 产品目录中的所有信息和数字均不具约束力, 特别是有关产品的设计、尺寸和颜色的信息。

2. 所有图形、图纸和其他文档的版权和所有权应归 TE Connectivity 和 Intercontec 产品系列所有。这特别适用于标记为机密的文档。与第三方共享数据需要事先获得 Intercontec 的书面同意。

3. 在个别情况下, Intercontec 保留在收到和接受订单后, 为改进产品技术而作出适当和合理的任何更改的权利。

1. All information and figures in the catalogue are nonbinding, in particular regarding design, size and color of products.

2. Copyright and right of ownership in and to all figures, drawings and other documents shall remain with TE Connectivity and INTERCONTEC product family. This is particularly applicable to documents marked as *confidential*. Sharing of data with third parties requires prior consent in writing from INTERCONTEC.

3. In individual cases INTERCONTEC reserves the right to any changes contributing to the technical improvement of the products as appropriate and reasonable also after receipt and acceptance of orders.

Connect With Us

For questions on TE Connectivity's INTERCONTEC products, please send your request to intercontec@te.com or visit te.com/support to chat with a Product Information Specialist.

te.com

TE Connectivity, TE connectivity (logo) and Every Connection Counts are trademarks. All other logos, products and/or company names referred to herein might be trademarks of their respective owners.

The information given herein, including drawings, illustrations and schematics which are intended for illustration purposes only, is believed to be reliable. However, TE Connectivity makes no warranties as to its accuracy or completeness and disclaims any liability in connection with its use. TE Connectivity's obligations shall only be as set forth in TE Connectivity's Standard Terms and Conditions of Sale for this product and in no case will TE Connectivity be liable for any incidental, indirect or consequential damages arising out of the sale, resale, use or misuse of the product. Users of TE Connectivity products should make their own evaluation to determine the suitability of each such product for the specific application.

© 2017 TE Connectivity. All Rights Reserved.

1-1773906-3 CG 11/2021 WSP Rev.

CATALOG

TE Connectivity
Industrial Solutions

Pfnorstraße 1
64293 Darmstadt

Tel +49 (0)6151 607 1695
www.te.com